

# Phantom data

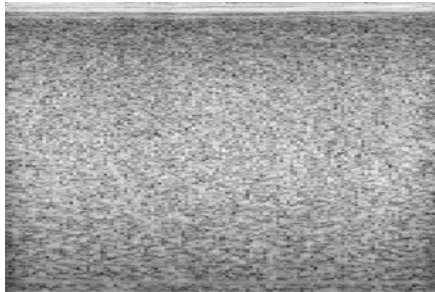
- These data are radiofrequency ultrasound data from phantom experiments (CIRS models 049 and 059)
- They were acquired with an Ultrasonix Ultrasound scanner, equipped with a L14-5W/60 transducer.
- Sampling frequency : 40 MHz
- These data are for non-commercial use.
- If you find these or some of these data useful and if you use them in publications, please indicate that these data are made available from the following study:

L. Seppecher, E. Bretin, P. Millien, L. Petrusca and E. Brusseau, *Reconstructing the spatial distribution of the relative shear modulus in quasi-static ultrasound elastography: plane stress analysis*, Ultrasound in Medicine and Biology, vol. 49, n°3, pp. 710-722, 2023.

For the CIRS 049 phantom, spherical inclusions are not visible in the B-mode images.

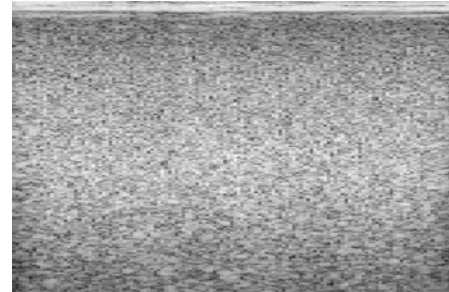
## Phantom data

- CIRS phantom, model 049  
13-kPa inclusion



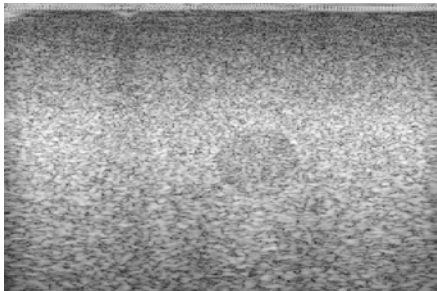
CIRS049\_13kPa\_Inc.mat

- CIRS phantom, model 049  
47-kPa Inclusion



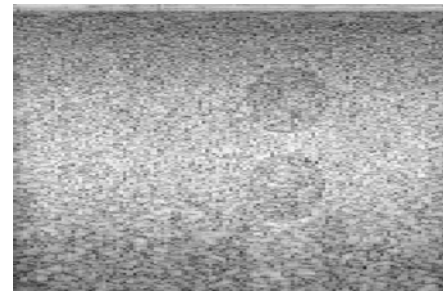
CIRS049\_47kPa\_Inc.mat

- CIRS phantom, model 059  
single inclusion



CIRS059\_Single\_Inc.mat

- CIRS phantom, model 059  
two inclusions



CIRS059\_Two\_Inc.mat