



Validation of a new GATE module for radiation therapy : simulation of a 6 MV Elekta Precise linear accelerator head.



L. Grevillot^{1,2,3}, T. Frisson^{1,2,3}, N. Zahra^{1,3,4}, J.-N. Badel^{1,2,3} & D. Sarrut^{1,2,3}

1 : Université de Lyon, F-69622 Lyon, France.

2 : Creatis, CNRS UMR 5220, F-69622, Villeurbanne, France.

3 : Léon Bérard cancer centre - 28 rue Laennec, F-69373 Lyon cedex 08, France.

4 : IPNL, CNRS UMR 5822, F-69622, Villeurbanne, France.

CENTRE RÉGIONAL

LÉON-BÉRARD

Soigner, chercher, vaincre. Ensemble



INTRODUCTION

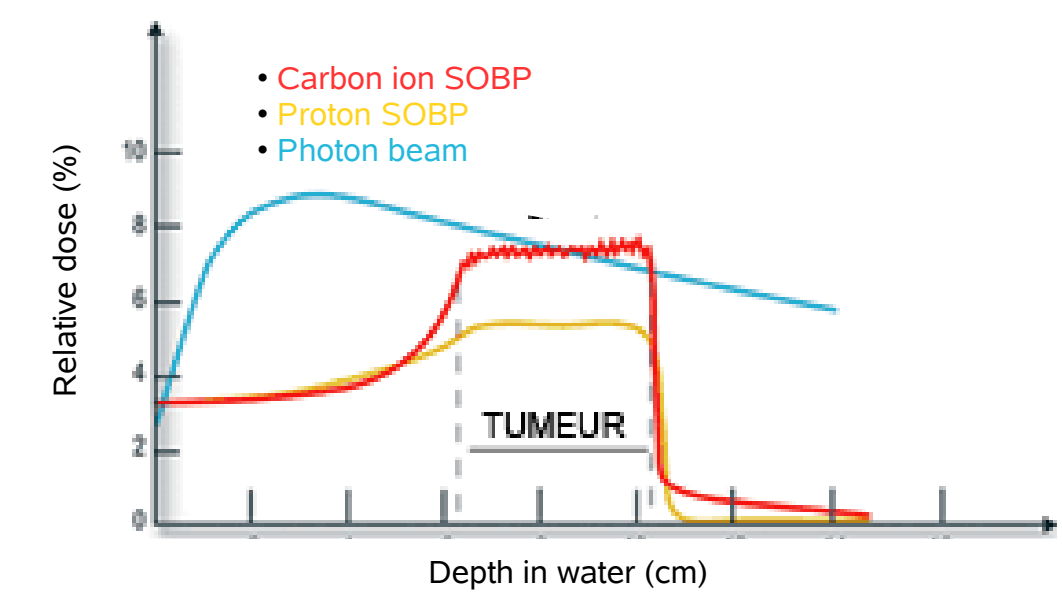
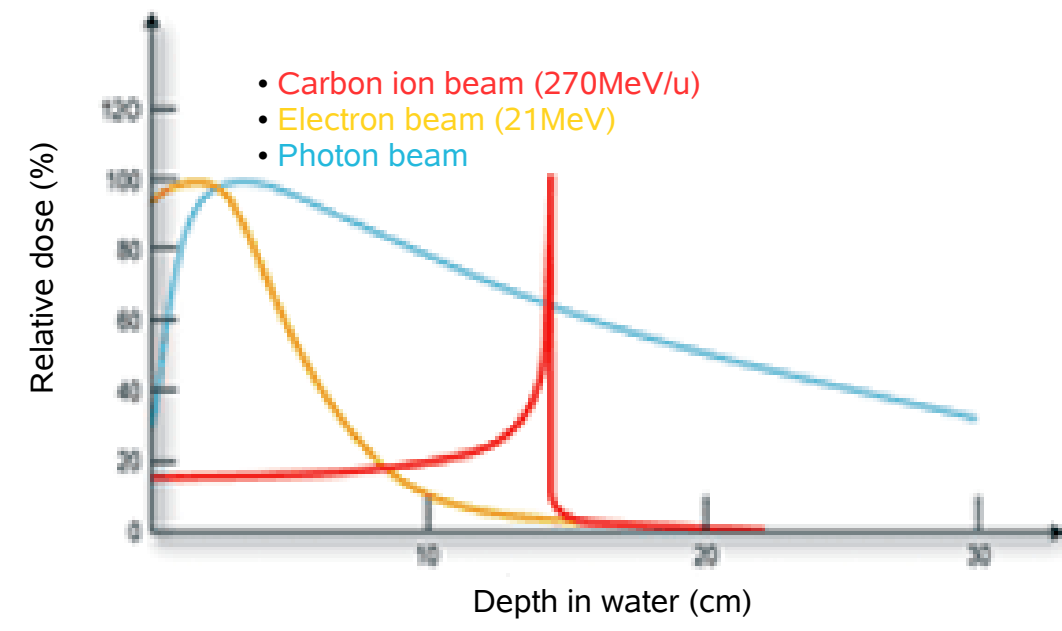
GATE : a dedicated toolkit for medical physics

GATE : a validated tool for TEP/SPECT simulations

GATE is the **Geant4-based Monte Carlo toolkit** initiated by several collaborative international institutions. [S. Jan 2004]

The main **assets** of GATE are:

- Quicker learning phase for novices.
- Simplicity of simulations : no C++, only user-friendly macro files.
- Dedicated tools for medical physics applications: SPECT & TEP imaging, Radiotherapy (e,γ), Hadron therapy (¹H, ¹²C).



Initially developed for TEP and SPECT, the **new release v6.0 (October 2009)** present a new module for radiotherapy and hadrontherapy applications.

GATE

In the present work, a set of tools dedicated to conventional radiotherapy has been validated and applied for the **simulation of a 6MV Elekta precise Linac.**

Gate is a collaboration of several international institutions working together for the common development and validation of the GATE software.

www.opengatecollaboration.org

MATERIALS & METHODS

A two stages simulation :

Simulation of the **exact geometry** according to constructor specifications.

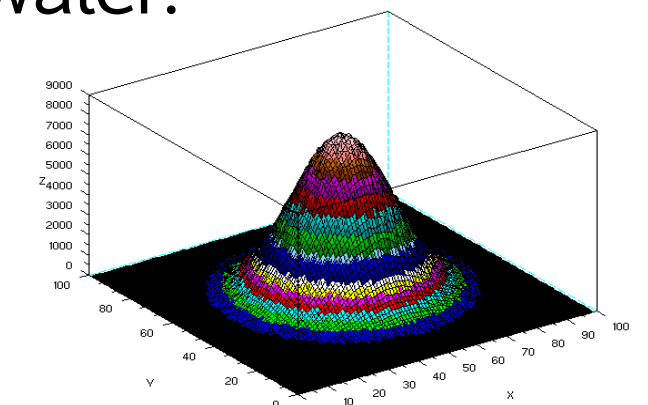
First stage: from the electron beam down to the secondary collimator.

Second stage : until the water phantom.

Dedicated tools for radiotherapy :

• **Primary electron beam**

- Gaussian energy distribution adjusted to match depth dose in water.
- Gaussian spot of electrons (FWHM = 3mm) adjusted to match transverse profiles in water. [Verhaegen 2003]



• **Selective Bremsstrahlung Splitting (SBS)**

Instead of one, **hundred photons are sampled at once** when the following conditions are fulfilled:

- **Energy criterion:** Electron energy > Threshold (5,7 MeV).
- **Direction criterion :** No backward photons.

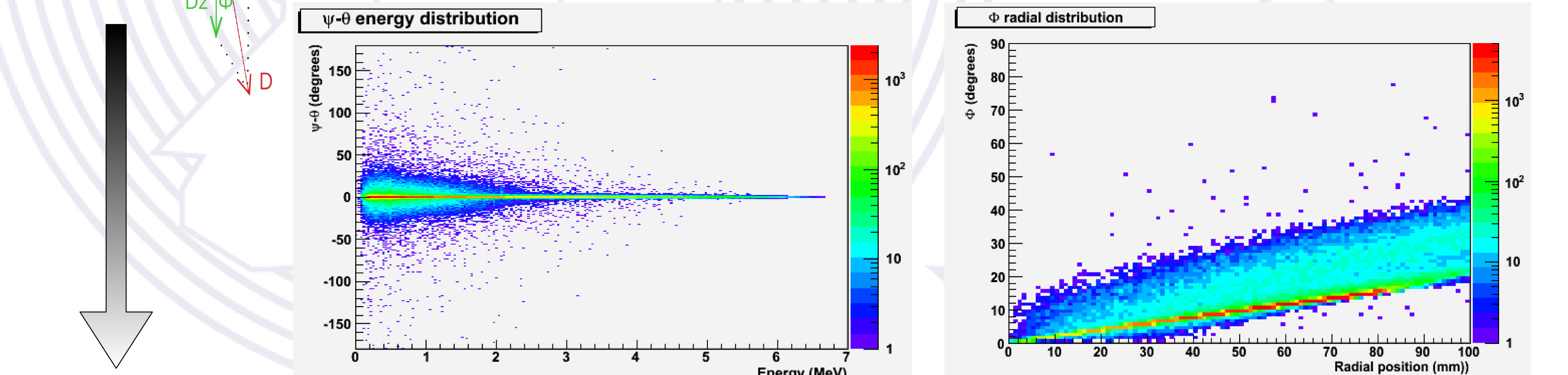
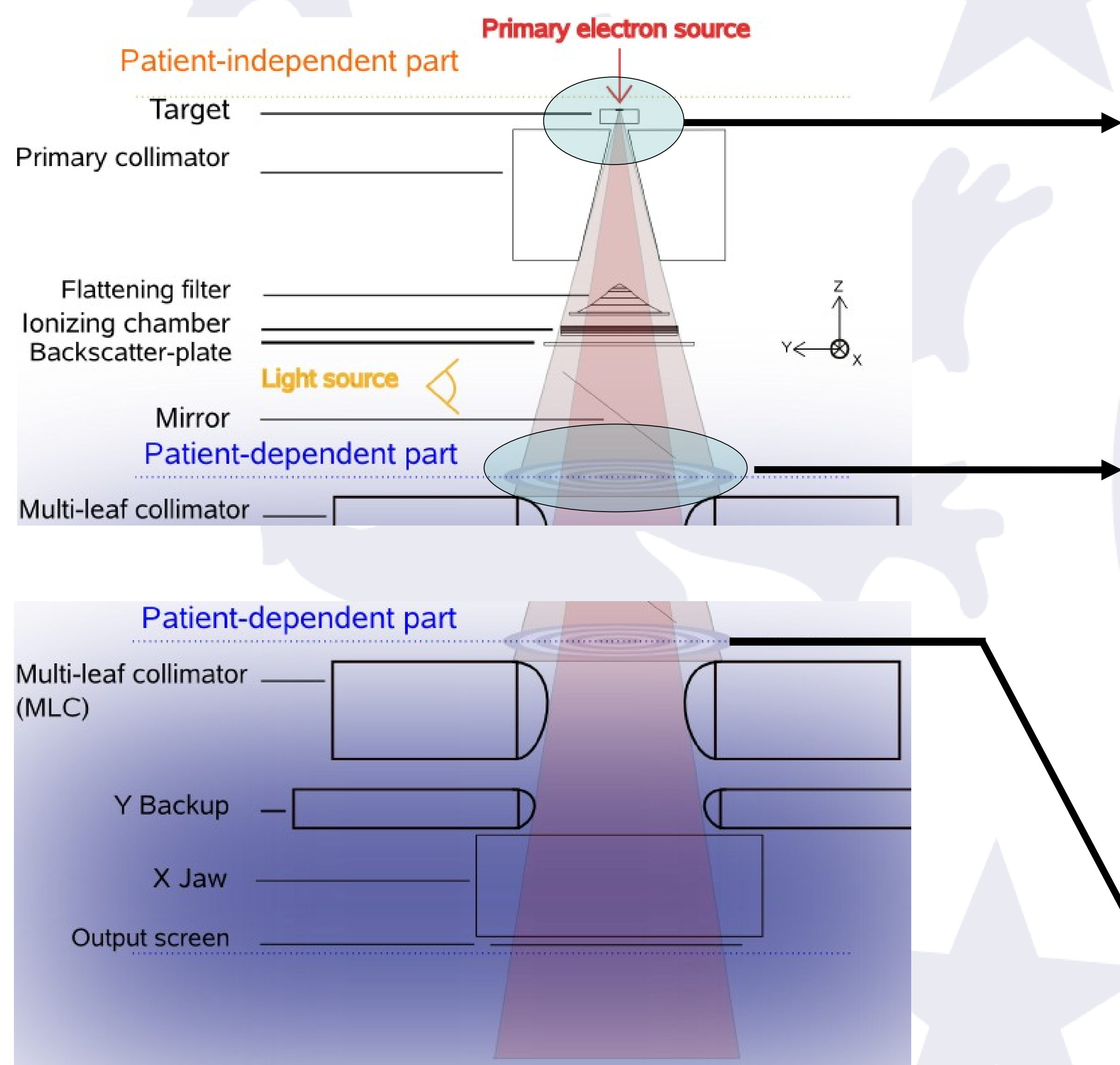
• **Phase Space (PhS) storage : Stage1**

7.10⁷ Photons were stored in the PhS during the patient dependent part simulation. [A. E. Schach von Wittenau 1999]

Then, **photon beam properties** were investigated :

- Energy spectrum correlated with photon position.
- Direction correlated to both: photon position & energy.

Finally, PhS was converted into **5,400 representative histograms.**



• **Multiple source model : Stage 2** [Michael K. Fix 2004]

1. Photon position (r,θ) is sampled in the phase space.
2. Photon energy (E) is sampled according to photon radial position (r).
3. Photon direction (Φ,Ψ) is sampled according to photon energy (E) and position (r).

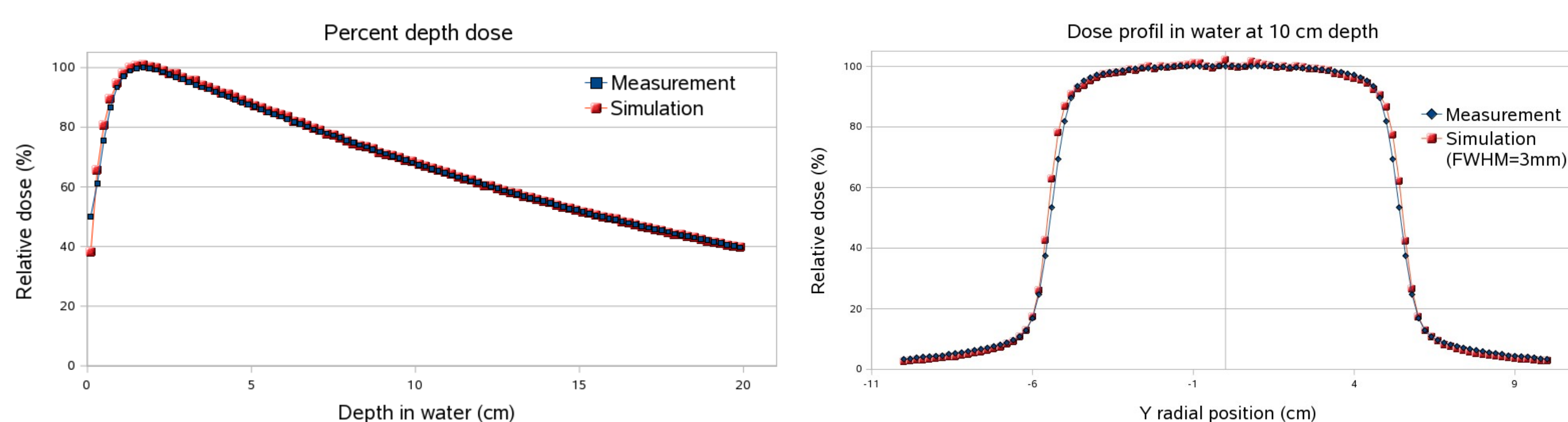
This process is looped until the required number of events is reached.

• **Energy/Dose scoring tool with statistical uncertainty**

A matrix of voxels of dimensions: 20x20x2 mm³ were created to score depth dose and transverse profiles. The lowest dimension (2mm) was in the direction of scoring interest. Statistical uncertainty is also computed. [Indrin J Chetty 2006]

RESULTS & DISCUSSION

Percent depth dose and profile at 10 cm depth simulations :



- **0.5% statistical uncertainty** reached in 22 hours (3.10⁸ events).
- **Depth dose and profile errors :** 0.5% and 1.1%
- **SBS efficiency:** 7.9 times faster than without
- No significant bias was introduced (difference < 0.5%)
- **1% statistical uncertainty** reached in 6 hours (8.10⁷ events).
- Additional investigations at different energies and depth, with different field sizes as well as non-squared fields will follow.
- **In conclusion, the GATE toolkit can be used efficiently for radiotherapy applications.**

References

GATE release V6.0

• S. Jan et al. GATE: a simulation toolkit for PET and SPECT. Phys Med Biol, 49(19):4543-4561, Oct 2004.
 • Frank Verhaegen and Jan Seuntjens. Monte carlo modelling of external radiotherapy photon beams. Phys Med Biol, 48(21):R107-R164, Nov 2003.
 • A. E. Schach von Wittenau et al. Correlated histogram representation of monte carlo derived medical accelerator photon-output phase space. Med Phys, 26(7):1196-1211, Jul 1999.
 • Michael K Fix, Paul J Keall, Kathryn Dawson, and Jeffrey V Siebers. Monte carlo source model for photon beam radiotherapy: photon source characteristics. Med Phys, 31(11):3106-3121, Nov 2004.
 • Indrin J Chetty et al. Reporting and analyzing statistical uncertainties in monte carlo-based treatment planning. Int J Radiat Oncol Biol Phys, 65(4):1249-1259, Jul 2006.
 • D. Sarrut and L. Guigues. Region-oriented ct image representation for reducing computing time of monte carlo simulations. Med Phys, 35(4):1452-1463, April 2008.

► **Toward a simulation toolkit dedicated for medical physics applications: TEP/SPECT imaging & radiotherapy with beam of electrons, photons and ions.**
 ► **DICOM RT Plan integration - CT voxel integration - Fast voxel navigation [Sarrut2008]**
 ► **Dynamic MLC - Dedicated tools for hadrontherapy (protons and ions).**